

Half Saddle

DESCRIPTION: HALF SADDLE 25.0MM

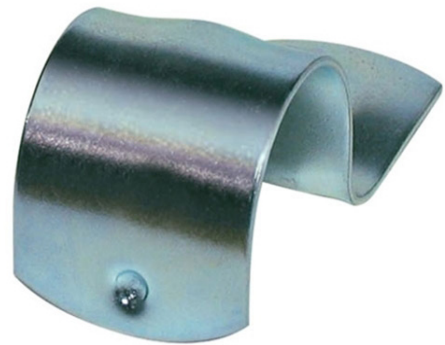
Technical Features

Material: Hot Dipped Galvanised Steel

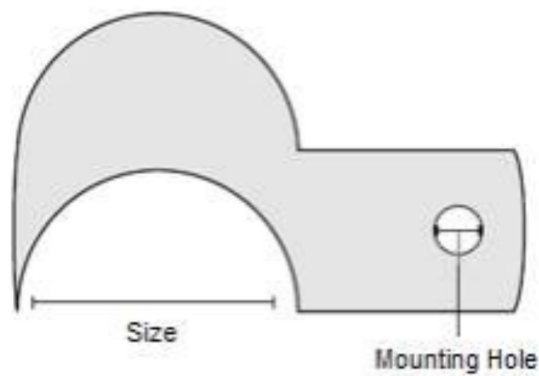
Coating: Zinc Plated

Size: 25.0mm

Mounting Hole: 6.2mm



Dimensions



PART No.	Size	Mounting Hole
HSZP25	25.0mm	6.2mm